



**Professor Henk Oswald, M.D., Ph.D.**

Dr. Henk Oswald was a prominent pioneer in the fields of natural health and metabolic chemistry. During the course of a distinguished medical career that spanned more than forty years, he received over 70 awards and honors in recognition of his significant contributions. Included among these is the prestigious Albert Schweitzer Award for Medicine, and knighthood in the Knights of Malta.

Dr. Oswald was the first in Europe to utilize the HLB blood test and later the first to use live blood analysis. In 1980 he participated in research that detected the connection between intestinal microorganisms and diseases in other organs. He was frequently a key speaker at seminars all over the world on the subject of the early detection of cancer and other degenerative diseases.

In the spring of 2004, Professor Oswald passed away at the age of 81.

### **Nutritional Evaluation utilizing dark field microscopy**

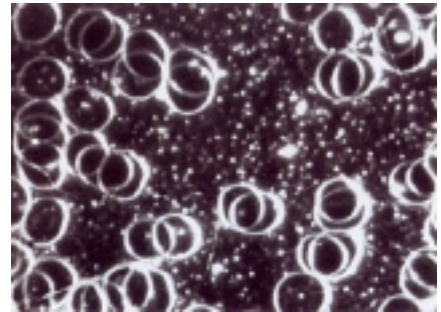
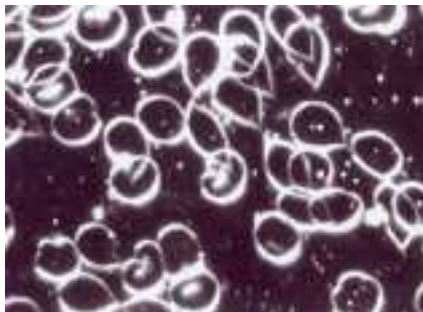
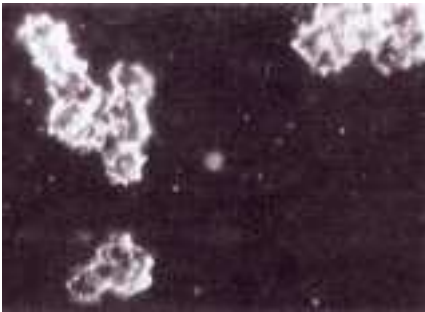
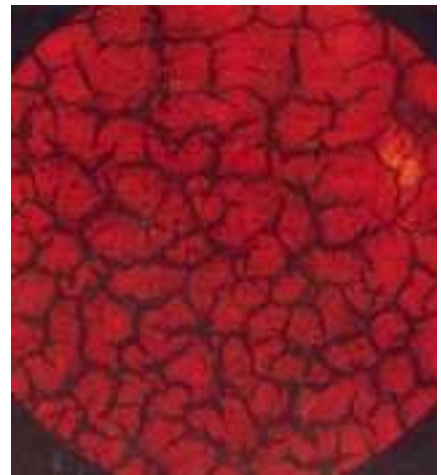
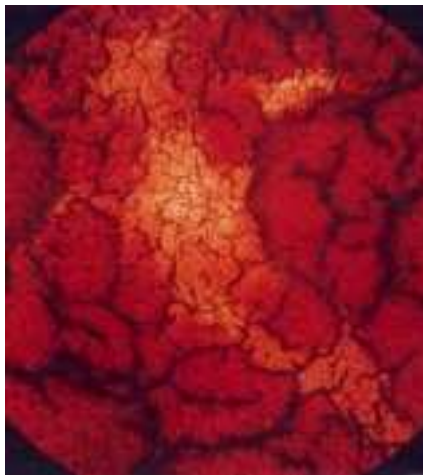
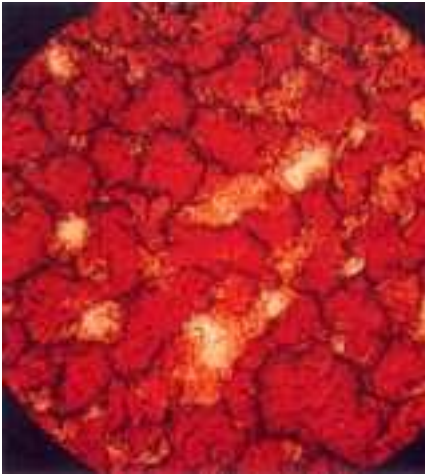
The pictures on the following pages indicate the power and benefits of Samento. The "Before Treatment" photographs are of damaged blood cells due to free radical attack. The "After Treatment" photographs show cells after treatment with only Samento.

Note how the attack of free radicals has damaged the cells. The formerly healthy cells have lost their integrity. This is indicated by their clumping together and fuzzy appearance. The free radicals have opened they way to fungal development and other micro-organic invaders. Because of free radical damage, the cell has an inability to process nutrients.

In the photographs of cells receiving treatment, you will note they have regained their independence. The damaged areas are minimized. This is indicated by the lack of yellowish white discoloration, increased clarity, and greater cell integrity.

As you can see, Samento has succeeded in restoring health to the individual blood cells, and in an amazingly short time period.

# Rheumatoid Arthritis Patient Treated with Samento (600 mg.)

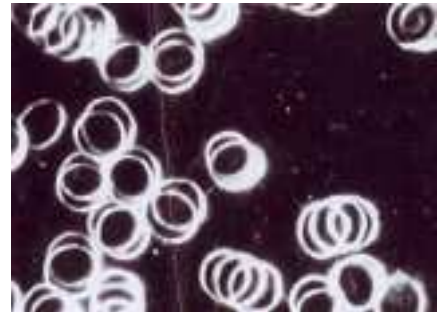
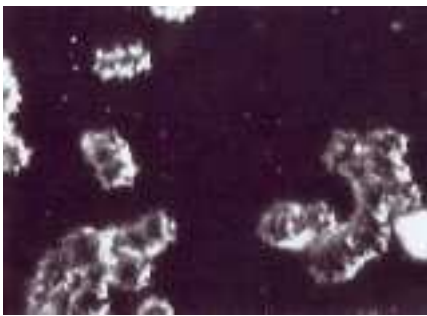
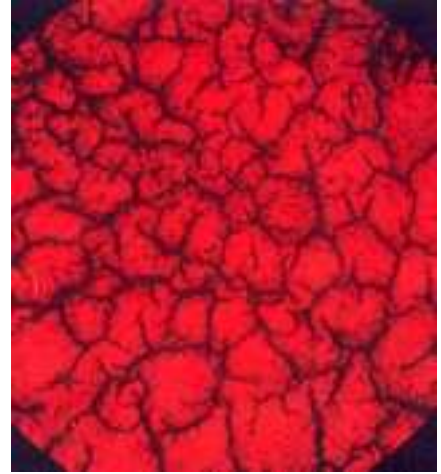
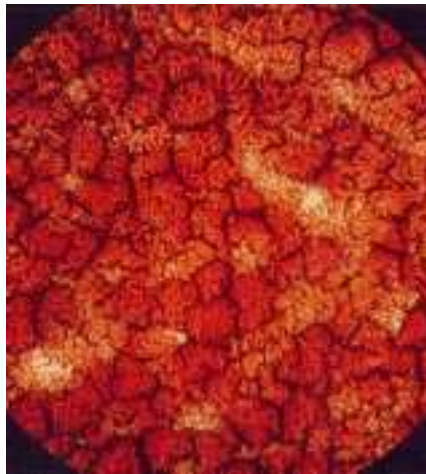


Patient with rheumatoid arthritis in much pain, on a regimen of four daily painkillers and cortisone. The patient is put on a regimen of one Samento (600 mg.) four times daily.

The top photograph shows fewer white spots. The bottom photograph shows the cells less attached, but with free radical damage and oxidation. Samento (600 mg.) has anti-oxidant properties and is a free radical scavenger, but it cannot be used in combination with cortisone, so the cortisone is discontinued. The patient continues on a regimen of two painkillers and three Samento (600 mg.) daily.

Three months later the white spots are almost eliminated (top) and no cell deformation is evident in the red cells (bottom). In addition, the somatids are plentiful and the plasma is clean. After six months of Samento (600 mg.) the patient feels fine, can walk without crutches and is experiencing almost no pain. After one year, the patient is put on a maintenance dose of one Samento (600 mg.) daily.

## Arthritis Patient Treated with Samento (600 mg.)

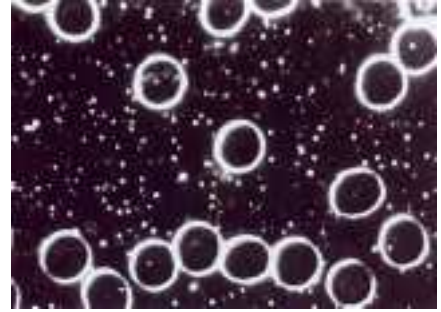
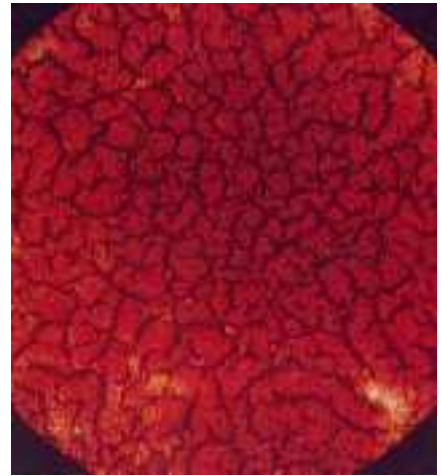


The above two photographs are typical pictures of arthritis. The patient, who has experienced five years of pain, was put on a regimen of two Samento (600 mg.) twice daily for four weeks,

These two photographs show the same patient after eight weeks of treatment, with the top photograph showing fewer white spots, and the bottom photograph showing the red blood cells less attached to one another.

The above photographs show "back to normal" blood. In the bottom photograph, the separation of the red blood cells is clear, along with clean plasma and plentiful somatids. The patient was put on a maintenance dosage of two Samento (600 mg.) once a day.

## Colon Cancer Patient Treated with Samento (600 mg.)



The white spots present on the top picture indicate colon cancer on a post-operative patient. The bottom photograph shows the red cells attached to one another and the presence of parasites. Patient is started on regimen of two Samento (600 mg.) three times a day for three weeks, then two times a day for the next several months.

Three months later there are fewer white spots (top), and the cells are more detached and with fewer lines (bottom). The hospital is postponing chemotherapy. The patient will continue with two Samento (600 mg.) twice daily.

Five months later there are no large white spots (top), and the blood is back to normal with many somatids, indicating an improved immune system. The patient feels fine and is back to work. Maintenance dosage: two Samento (600 mg.) once a day.