

ORIGINAL ARTICLE

# Neuroprotective activity of *Matricaria recutita* against fluoride-induced stress in rats

V.L. Ranpariya<sup>1</sup>, S.K. Parmar<sup>1</sup>, N.R. Sheth<sup>1</sup>, and V.M. Chandrashekhar<sup>2</sup>

<sup>1</sup>Department of Pharmaceutical Sciences, Saurashtra University, Rajkot-360005, Gujarat, India, and <sup>2</sup>Department of Pharmacology, H.S.K. College of Pharmacy, Bagalkot-587101, Karnataka, India

## Abstract

**Context:** Oxidative stress plays a key role in pathophysiology of many neurodegenerative disorders such as Alzheimer's disease, Parkinson's disease, Huntington's disease, and so on. Although *Matricaria recutita* L. (Asteraceae), German chamomile, is traditionally used for central nervous system (CNS)-related diseases, its antistress properties have received little attention.

**Objective:** The present study evaluated the neuroprotective effect of German chamomile against aluminium fluoride (AlF<sub>4</sub><sup>-</sup>)-induced oxidative stress in rats.

**Materials and methods:** The Sprague-Dawley rats of either sex (200–250 g) were selected and grouped as: group I received normal saline; group II received AlF<sub>4</sub><sup>-</sup> (negative control); groups III, IV, and V received 100, 200, and 300 mg/kg, orally, German chamomile methanol extract (GCME) along with AlF<sub>4</sub><sup>-</sup>; and group VI received quercetin (25 mg/kg, i.p.) + AlF<sub>4</sub><sup>-</sup>, respectively. After 10 days treatment with GCME, oxidative stress was induced by administering AlF<sub>4</sub><sup>-</sup> through drinking water for 7 days. Then, the protective antioxidant enzyme levels were measured and the histopathological studies were carried out.

**Results:** The GCME showed dose-dependent neuroprotective activity by significant decrease in lipid peroxidation (LPO) and increase in the superoxide dismutase (SOD), catalase (CAT), glutathione (GSH), and total thiol levels in extract-treated animals as compared with negative control group ( $P < 0.001$ ). The histopathological studies also revealed the potent neuroprotective action of German chamomile against oxidative brain damage.

**Conclusion:** The present study for the first time shows potent neuroprotective activity of the methanol extract of German chamomile against AlF<sub>4</sub><sup>-</sup>-induced oxidative stress in rats.

**Keywords:** Aluminium fluoride, chamomile, *Matricaria recutita*, neuroprotection, oxidative stress, reactive oxygen species

## Introduction

Fluoride (F) is utilized in a number of industrial practices and is a ubiquitous ingredient of drinking water, foodstuffs, and dental products (WHO, 2002). However, epidemiological studies have raised the possibility that prolonged exposure to aluminium (Al) in drinking water, perhaps as low as 0.1 ppm, may represent a risk factor for aging-related neurological impairments. In determining the effects of chronic exposure to Al in the drinking water, it is important to consider the factors that enhance or inhibit the bioavailability of Al and its effects on the nervous system (Varner et al., 1998). One such factor

is the nature of the Al complex and its speciation after ingestion. In earlier studies, it is hypothesized that when F and Al are both present in drinking water, they will form fluoroaluminium complexes (AlF<sub>3</sub>) in the stomach that, compared with their ionic forms, exhibit increased transport into bloodstream and likely across the blood-brain barrier (BBB) (Varner et al., 1993). The fluoroaluminium complex has been shown to produce neuronal loss in the CA1 and CA4 areas of the hippocampus when given to animals as 0.5 ppm in drinking water (Varner et al., 1998). The toxic effect may be related to a combination of effects, including impairment of energy-producing enzymes,

Address for Correspondence: V.L. Ranpariya, Department of Pharmaceutical Sciences, Saurashtra University, Rajkot-360005, Gujarat, India. Tel.: +91-9429374447. Fax: +91-281-2585083. E-mail: vishwash811@yahoo.co.in

(Received 18 August 2010; revised 04 October 2010; accepted 02 November 2010)

impaired dephosphorylation of hyperphosphorylated tau-protein, increased neuronal iron concentration, elevated free radical and lipid peroxidation (LPO) levels, and impaired DNA repair, all of which are related to excitotoxicity (Blaylock, 2004).

It is well-known that fluoride is highly active biologically, forming a strong hydrogen bond with the groups found in proteins and nucleic acids (Emsley et al., 1981). Fluoride, as  $F^-$  in bound form, is known to cross the BBB and accumulate in the brain of rats exposed to chronic high F levels. Some of the neurotoxic effects of F in rats include DNA damage, oxidative stress, decrease in the nicotinic acetylcholine receptors, and histopathological changes in brain cells of rats with decreased learning and memory ability (Chirumari & Reddy, 2007). Animal experiments reveal that fluoride increases the uptake of aluminium into the brain at 1 ppm in the drinking water (Varner et al., 1998). Fluoride has been shown to inhibit certain antioxidant enzymes and molecules, such as superoxide dismutase (SOD), glutathione (GSH) reductase, GSH peroxidase, catalase (CAT), and GSH (Li & Cao, 1994). This would not only increase free radical-provoked neuronal injury, but also enhance excitotoxicity, since reactive oxygen species (ROS) as well as nitrogen species and LPO products can trigger the excitotoxic process (Siesjö & Bengtsson, 1989). A growing body of evidence suggests the use of natural antioxidants as therapeutic alternatives against oxidant-induced toxicity (Tunali-Akbay et al., 2007). *Matricaria recutita* L. (Asteraceae), commonly known as German chamomile, is one of the most widely used herbs in the world, especially in children (Noonan et al., 2004). Chamomile is extensively used as a tea or tonic. It is traditionally used to treat anxiety, hysteria, nightmares, insomnia and sleep problems, convulsions, and even delirium tremens (Marten, 1995). German chamomile has also shown antioxidant activity against  $CCl_4$ -induced liver injury in rats (Gupta et al., 2006). The main chemical constituents of the German chamomile are terpenoids including  $\alpha$ -bisobolol, chamazulene, sesquiterpenes, and flavonoids such as apigenin, luteolin, and quercetin (Newall et al., 1996).

In our attempt to establish the neuroprotective activity of German chamomile, we previously reported the effectiveness of this plant in global cerebral ischemia/reperfusion-induced neuronal death, a widely accepted model to screen neuroprotective activity (Chandrashekar et al., 2010). In the light of above background, the present study evaluated possible neuroprotective effect of German chamomile against aluminium fluoride ( $AlF_4^-$ )-induced oxidative stress in rats.

## Materials and methods

### Drugs and chemicals

Trichloroacetic acid (TCA), 2-thiobarbituric acid (TBA), 5,5'-dithiobis (2-nitrobenzoic acid) (DTNB), GSH, and ( $\pm$ )-epinephrine were purchased from Sigma-Aldrich

Co., St. Louis, MO.  $AlF_4^-$  was purchased from Hi-Media, Mumbai, India. All other chemicals were of the highest purity.

### Collection of plant material

In the present study, capitulas of German chamomile were collected from the National Botanical Research Institute (NBRI), Lucknow, India during the month of June. Herbarium was prepared and the specimen was identified and authenticated by Prof. S. Kappali, Botanist, Department of Botany, Basaveshwar Science College, Bagalkot, Karnataka, India and a voucher specimen (B.Sc./Bot./14/08) was deposited for future reference.

### Preparation of plant extract

All capitulas were shade-dried at room temperature until they were free from moisture. Finally, the capitulas were subjected to pulverizer to get coarse powder and then passed through sieve #44 to get uniform powder. The sieved powder was stored in airtight high-density polyethylene container before extraction. The powdered capitulas (600 g) were subjected to successive extraction with petroleum ether (40–60°C) and subsequently with methanol (64–65.5°C). After the residue extraction, solvent was distilled off and excess solvent was completely removed by using a rotatory flash evaporator to get concentrate, then completely dried in freeze-drier and stored in airtight container under refrigeration. The obtained extract (64 g, yield 10.7% w/w) was used for neuroprotective activity.

### Determination of $LD_{50}$

The acute toxicity study was performed as per the method described by Litchfield and Wilcoxon (1949), and  $LD_{50}$  was calculated accordingly. In brief, the German chamomile methanol extract (GCME) in the dose range of 10–2000 mg/kg was administered orally to different groups of mice ( $n=10$ ). The animals were examined at every 30 min up to a period of 3 h and then, occasionally for additional period of 4 h; finally, overnight mortality was recorded. All tests on rats were performed at three dose levels: 100, 200, and 300 mg/kg of body weight corresponding to 5, 10, and 15% of  $LD_{50}$  value (2000 mg/kg), respectively.

### Experimental animals

The Sprague-Dawley rats of either sex (200–250 g) were obtained from the central animal house of H.S.K. College of Pharmacy and Research Centre, Bagalkot, India. The animals were housed at room temperature ( $25 \pm 1^\circ C$ ) with 50–55% relative humidity and were provided standard laboratory feed (Amrut, Maharashtra, India) and water *ad libitum*. The study protocol was approved by Institutional Animal Ethics Committee (approval number-HSKCP/IAEC/Clear/2007-08/1). For the present study, animals were randomized into six groups of eight animals each and allowed to acclimatize for 1 week before the experiments.

## Experimental design

The animals were divided into six groups of eight rats each as follows:

- Group I: normal saline, 10 mL/kg, *per os* (p.o.)
- Group II:  $\text{AlF}_4^-$  (negative control)
- Group III: 100 mg/kg GCME, p.o. +  $\text{AlF}_4^-$
- Group IV: 200 mg/kg GCME, p.o. +  $\text{AlF}_4^-$
- Group V: 300 mg/kg GCME, p.o. +  $\text{AlF}_4^-$
- Group VI: Quercetin 25 mg/kg, i.p. +  $\text{AlF}_4^-$  (reference standard).

Animals from each group were fed with drug or vehicle for 10 days prior to  $\text{AlF}_4^-$  treatment through their drinking water (7 days at a dose of 600 ppm).

## Preparation of post-mitochondrial supernatant

Following decapitation, the brain was removed and washed in cooled 0.9% saline, kept on ice, and subsequently blotted on filter paper, then weighed and homogenized as 10% w/v in cold phosphate buffer (0.05 M, pH 7.4). The homogenates were centrifuged at 10,000 g for 10 min at 4°C (MPW-350R, Korea) and post-mitochondrial supernatant (PMS) was stored at -80°C freezer until assayed (Chandrashekhara et al., 2010).

## Biochemical estimation

### Lipid peroxidation

Thiobarbituric acid reactive substances (TBARS) in the homogenate were estimated by using standard protocol (Prabhakar et al., 2006). In brief, 0.5 mL of 10% homogenate was incubated with 15% TCA, 0.375% TBA, and 5 N HCl at 95°C for 15 min; the mixture was cooled, centrifuged, and absorbance of the supernatant was measured at 512 nm against appropriate blank. The amount of LPO was determined by using  $\epsilon = 1.56 \times 10^5$  per M/cm and expressed as TBARS nmol/mg of protein (Braugher et al., 1987).

### Superoxide dismutase

SOD activity was determined based on the ability of SOD to inhibit the autoxidation of epinephrine to adrenochrome at alkaline pH (Misra & Fridovich, 1972). In brief, 25  $\mu\text{L}$  of the supernatant obtained from the centrifuged brain homogenate was added to a mixture of 0.1 mM epinephrine in carbonate buffer (pH 10.2) in a total volume of 1 mL and the formation of adrenochrome was measured at 295 nm. The SOD activity (U/mg of protein) was calculated by using the standard plot.

### Catalase

CAT activity was assayed by the method of Claiborne (1985). In brief, the assay mixture consisted of 1.95 mL phosphate buffer (0.05 M, pH 7.0), 1 mL hydrogen peroxide (0.019 M), and 0.05 mL homogenate (10% w/v) in a total volume of 3 mL. Changes in absorbance were recorded at 240 nm. CAT activity was calculated in terms of nM  $\text{H}_2\text{O}_2$  consumed/min/mg of protein.

## Total thiols

This assay is based on the principle of formation of relatively stable yellow color by sulfhydryl groups with DTNB (Moron et al., 1979). In brief, 0.2 mL of brain homogenate was mixed with phosphate buffer (pH 8), 40  $\mu\text{L}$  of 10 mM DTNB, and 3.16 mL of methanol. This mixture was incubated for 10 min and the absorbance was measured at 412 nm against appropriate blanks. The total thiol content was calculated by using  $\epsilon = 13.6 \times 10^3$  per M/cm (Sedlak & Lindsay, 1968).

## Glutathione

GSH was estimated in various tissues by the method of Sedlak and Lindsay (1968). In brief, 5% tissue homogenate was prepared in 20 mM ethylenediaminetetraacetic acid (EDTA), pH 4.7, and 100  $\mu\text{L}$  of the homogenate or pure GSH was added to 0.2 M Tris-EDTA buffer (1.0 mL, pH 8.2) and 20 mM EDTA (0.9 mL, pH 4.7) followed by 20  $\mu\text{L}$  of Ellman's reagent (10 mmol/L DTNB in methanol). After 30 min of incubation at room temperature, absorbance was read at 412 nm. Samples were centrifuged before the absorbance of the supernatants was measured (Khyriam & Prasad, 2003).

## Total protein

Protein concentration in all samples was determined by the method of Lowry et al. (1951).

## Histopathology

The brains from normal and experimental groups were fixed with 10% formalin and embedded in paraffin wax and cut into longitudinal sections of 5  $\mu\text{m}$  thickness. The sections were stained with hematoxylin and eosin dye for histopathological observation (Chandrashekhara et al., 2010).

## Statistical analysis

All the data are presented as mean  $\pm$  SEM. The significance of difference in means between negative control and treated animals for different parameters was determined by using one-way analysis of variance (ANOVA) followed by multiple comparisons Dunnett's test. A value of  $P < 0.05$  was considered statistically significant.

## Results

### Determination of $\text{LD}_{50}$

The  $\text{LD}_{50}$  of GCME was found to be 2000 mg/kg, p.o. of body weight of rats.

### Biochemical estimation

As shown in Table 1, brain LPO levels were significantly increased ( $P < 0.001$ ) in terms of TBARS in  $\text{AlF}_4^-$ -treated animals (negative control) as compared with normal group. It is significantly reduced ( $P < 0.001$ ) in the GCME-treated groups in dose-dependent manner as well as in quercetin-treated group ( $P < 0.001$ ). The  $\text{AlF}_4^-$ -treated group showed a significantly reduced ( $P < 0.001$ ) levels

Table 1. Effect of German chamomile methanol extract (GCME) against  $\text{AlF}_4^-$ -induced oxidative stress in rats.

Treatment group	Lipid peroxidation (nmol/mg of protein)	Superoxide dismutase (U/mg of protein)	Catalase (U/mg of protein)	Glutathione (nmol/mg of protein)	Total thiols ( $\mu\text{mol/mg}$ of protein)
Normal	12.13 $\pm$ 2.91	171.7 $\pm$ 21.56	0.15 $\pm$ 0.02	7.06 $\pm$ 0.64	18.88 $\pm$ 0.89
Negative control ( $\text{AlF}_4^-$ )	57.25 $\pm$ 2.87***	32.4 $\pm$ 1.43***	0.01 $\pm$ 0.01	3.32 $\pm$ 0.46***	12.64 $\pm$ 0.42***
100 mg/kg MR + $\text{AlF}_4^-$	17.79 $\pm$ 3.15 <sup>a</sup>	186.2 $\pm$ 13.17 <sup>a</sup>	0.32 $\pm$ 0.05 <sup>a</sup>	6.13 $\pm$ 0.26 <sup>a</sup>	17.79 $\pm$ 0.79 <sup>a</sup>
200 mg/kg MR + $\text{AlF}_4^-$	15.96 $\pm$ 2.59 <sup>a</sup>	180.8 $\pm$ 7.24 <sup>a</sup>	0.37 $\pm$ 0.04 <sup>a</sup>	7.46 $\pm$ 0.24 <sup>a</sup>	19.82 $\pm$ 0.91 <sup>a</sup>
300 mg/kg MR + $\text{AlF}_4^-$	12.55 $\pm$ 2.29 <sup>a</sup>	184.7 $\pm$ 7.37 <sup>a</sup>	0.41 $\pm$ 0.03 <sup>a</sup>	7.03 $\pm$ 0.17 <sup>a</sup>	18.70 $\pm$ 0.45 <sup>a</sup>
Q 25 mg/kg + $\text{AlF}_4^-$	8.10 $\pm$ 1.96 <sup>a</sup>	281.9 $\pm$ 44.45 <sup>a</sup>	0.57 $\pm$ 0.06 <sup>a</sup>	7.97 $\pm$ 0.44 <sup>a</sup>	20.25 $\pm$ 0.63 <sup>a</sup>

Values are mean  $\pm$  SEM,  $n=8$ , one-way analysis of variance (ANOVA) followed by multiple comparison Dunnett's test, \* $P < 0.05$ , \*\* $P < 0.01$ , and \*\*\* $P < 0.001$  vs. normal and <sup>a</sup> $P < 0.001$  vs. negative control.  $\text{AlF}_4^-$ : Aluminium fluoride; MR: *Matricaria recutita*; Q: quercetin.

of SOD, CAT, GSH, and total thiols as compared with the normal group, whereas their levels were significantly increased ( $P < 0.001$ ) in GCME-treated groups as well as in quercetin-treated group ( $P < 0.001$ ).

### Histopathology of rat brain

As shown in Figure 1, histopathological studies revealed that there was a marked damage observed in the hippocampus region in  $\text{AlF}_4^-$ -treated animals. In contrast to the normal brain (Figure 1A), large intracellular space along with significantly increased leukocyte infiltration and marked cellular necrosis were observed in the  $\text{AlF}_4^-$ -treated group (Figure 1B). This damage was markedly reversed up to normal in the GCME-treated groups (Figure 1C–1E) and also in quercetin-treated group (Figure 1F).

### Discussion

In the present study, we observed the therapeutic potential of German chamomile for its neuroprotective action against  $\text{AlF}_4^-$ -induced oxidative stress in rat brain. In our studies, the brain damage was produced through administration of  $\text{AlF}_4^-$  in drinking water of rats. The severity of oxidative damage to the brain was estimated by measuring LPO, SOD, CAT, GSH, and total thiol levels. The histopathological studies were performed to substantiate these parameters. The results of the study revealed the neuroprotective effect of GCME against the  $\text{AlF}_4^-$ -induced oxidative stress as compared with negative control group.

Oxygen is essential for aerobic life, but it is also precursor to the formation of harmful ROS (Albert & Yong-Mei, 1998). Free radicals in the living organism are generated both enzymatically and non-enzymatically, leading to the formation of ROS. Among all the ROS generated,  $\text{OH}^-$  and  $\text{OONO}^-$  are the most potent and can cause damage to proteins, lipids, and nucleic acids, resulting in the inactivation of some enzyme activities, disruption of ion homeostasis, and modification of the genetic apparatus and apoptotic death (Halliwell, 1991). A body of evidence suggests fluoride as the toxicant, as its exposure can occur in the workplace and in the environment (Chinoy, 2003; Sinha et al.,

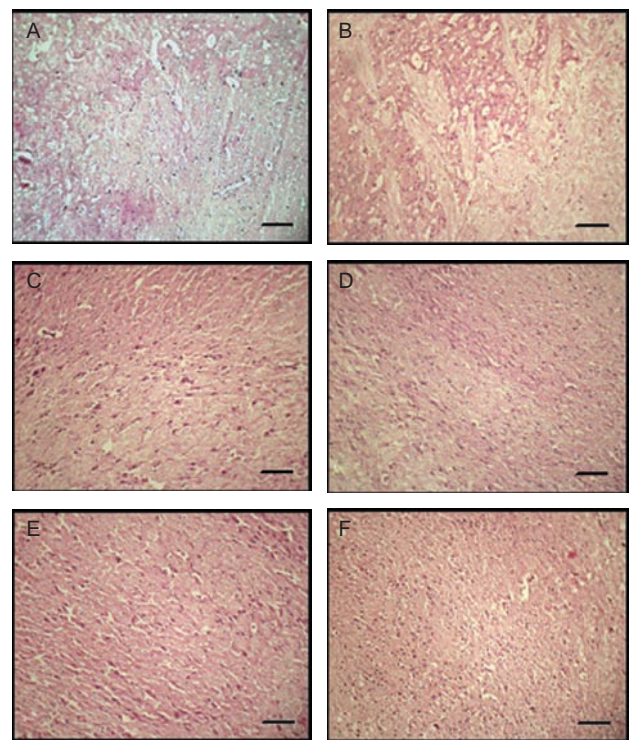


Figure 1. Neuroprotective effect of German chamomile methanol extract against  $\text{AlF}_4^-$ -induced oxidative brain damage in rats. Photographs of brain sections from different treatment groups stained with hematoxylin and eosin (H&E), 10 $\times$ . Plates: A: normal; B:  $\text{AlF}_4^-$ -treated group; C–E: 100 mg/kg +  $\text{AlF}_4^-$ ; 200 mg/kg +  $\text{AlF}_4^-$  and 300 mg/kg +  $\text{AlF}_4^-$ , respectively; and F: quercetin 25 mg/kg +  $\text{AlF}_4^-$ . In plate B,  $\text{AlF}_4^-$  through the drinking water caused brain damage in rats. There was a marked increase in intracellular space, neutrophil infiltration, and neuronal necrosis observed in the hippocampus region in  $\text{AlF}_4^-$ -treated animals (B). There was a significant reversal of damage observed in German chamomile-treated groups (C–E) and also in quercetin-treated group (F). Scale bar: 100  $\mu\text{m}$ .

2007). Fluorosis caused by excess intake of fluoride is a slow, progressive degenerative disorder, known to affect predominantly the skeletal muscles, brain, and spinal cord. Recent studies have shown the accumulation of fluoride in the hippocampus of the brain, causing the degeneration of neurons and decreased aerobic metabolism (Sinha et al., 2007). It has been reported that during the functioning

of the immune system, such as in phagocytosis, reactive oxygen and nitrogen species are generated. If they are left unchecked, they can affect the components of the immune system by inducing oxidative damage (Devasagayam & Sainis, 2002). There is much evidence that superoxide free radicals and LPO plays an important role in fluorosis. Superoxide radicals,  $\cdot\text{O}_2^-$ , are highly reactive and may lead to chemical modification and impairment of proteins, lipids, carbohydrates, and nucleotides in living cells. This toxicity is not only due to an increase in superoxide radicals and lipid peroxides, but also accompanied by a decline in activities of some antioxidant enzymes, viz., SOD, GSH, and CAT, as well as alteration in the levels of reducing substances like GSH and ascorbic acid (Chinoy, 2003).

Fluoride has been shown to inhibit SOD, which would increase intracellular levels of the superoxide radicals (Vani & Reddy, 2000). Aluminium, another related neurotoxin, is known to produce a dramatic increase in brain free radical generation and LPO both directly and by increasing neuronal and glial iron levels (Mundy et al., 1997). Aluminofluoride complexes bind ionically to the terminal oxygen of GDP phosphate. Enzyme-bound GDP or ADP could therefore form a complex with  $\text{AlF}_4^-$  that imitates ATP or GTP in its effect on protein confirmation. This effect often causes a structural change that locks the site and prevents the dissociation of the triphosphate. These complexes influence the activity of a variety of phosphatases, phosphorylases, and kinases (Bigay et al., 1987).

Interestingly, recent studies report neuroprotective activities of various plant constituents. For instance, Shutenko et al. (1999) showed the antioxidant profile of flavonoids as strong basis for a neuroprotective activity in the brain. Further, it has been characterized that changes in brain nitric oxide levels in a model of global ischemia with reperfusion in the presence of quercetin attributed the observed changes to the free radical scavenger action of the flavonoids (Shutenko et al., 1999). In consistence with this, apigenin, an important flavonoid present in the German chamomile, showed a neuroprotective activity against acute transient focal cerebral ischemia in rats. Apigenin decreased the glutamate-induced  $[\text{Ca}^{2+}]_i$  increase by inhibiting AMPA, NMDA, and  $\text{K}^+$ , and metabotropic glutamate receptor-induced  $[\text{Ca}^{2+}]_i$  increase in cultured rat hippocampal neuron (Liu et al., 2008) and it may also inhibit the binding of  $\text{AlF}_4^-$  complexes to GDP and have membrane-stabilizing activity.

In our previous study, we reported potent neuroprotective action of German chamomile against global model of ischemia (Chandrashekhar et al., 2010). This caused us to further establish the effect of German chamomile in another model of cerebral damage.

In the light of above studies, we selected the  $\text{AlF}_4^-$ -induced oxidative stress model for evaluation of neuroprotective activity of German chamomile. Our results demonstrated an enhanced LPO level expressed in terms of TBARS and significantly reduced activity of SOD and CAT in the  $\text{AlF}_4^-$ -treated group confirming the brain damage due to oxidative stress. The level of LPO is a measure of

membrane damage as well as alteration in structure and function of cellular membrane. Chamazulene, an active constituent from chamomile, affects the free radical processes and inhibits LPO *in vitro* in a concentration- and time-dependent manner (Rekka et al., 1996). In accordance with this, the LPO level was significantly decreased in the GCME-treated groups, which may be attributed to the effect of chamazulene. The SOD activity was brought to near-normal after treatment with German chamomile in  $\text{AlF}_4^-$ -treated experimental animals. The decreased CAT activity in  $\text{AlF}_4^-$ -treated animals may be due to link up to exhaustion of the enzyme because of oxidative stress. The CAT activity was restored to normal after treatment with German chamomile evidently shows the antioxidant properties of the German chamomile against free radicals. Similarly, significantly decreased levels of GSH and total thiols were observed in  $\text{AlF}_4^-$ -treated animals. Their levels were restored to near-normal in the German chamomile-treated animals.

Natural products with such properties constitute an ideal choice for maximum therapeutic effect with minimal risk of iatrogenic adverse effects. Consideration with our findings, significantly elevated LPO and depleted protective enzymes (SOD, GSH, CAT and total thiols) in  $\text{AlF}_4^-$ -treated groups are thus in correlation with already available reports on the role of oxidative stress in cell injury in general and cerebrovascular disease in particular. The observed results leading to neurodegeneration was confirmed by the histopathological differences between different treatment groups. On the basis of the previous studies, the apigenin and other flavonoids play a role in the probable mechanism by which the German chamomile has normalized the oxidative brain damage may be because of its ability to decrease the glutamate-induced increase in intracellular  $\text{Ca}^{2+}$  level, which requires further studies to elucidate the exact mechanism of action.

## Conclusion

In conclusion, our results, for the first time, suggest that German chamomile has the potent neuroprotective action against the  $\text{AlF}_4^-$ -induced oxidative damage in brain. Further studies are required to find exact molecular mechanism for the neuroprotective action of this plant.

## Acknowledgement

We are thankful to Dr. I.S. Muchchandi, Principal and Head, Department of Pharmacology, H.S.K. College of Pharmacy and Research Centre, Bagalkot, Karnataka, India, for providing necessary facilities during the course of this study.

## Declaration of interest

The authors report no conflicts of interest. The authors alone are responsible for the content and writing of the paper.

## References

- Albert YS, Yong-Mei C. (1998). Oxidative stress and neurodegenerative disorders. *J Biomed Sci* 5:401-414.
- Bigay J, Deterre P, Pfister C, Chabre M. (1987). Fluoride complexes of aluminium or beryllium act on G-proteins as reversibly bound analogues of the gamma phosphate of GTP. *EMBO J* 6:2907-2913.
- Blaylock RL. (2004). Excitotoxicity: A possible central mechanism in fluoride neurotoxicity. *Fluoride* 37:301-314.
- Braughler JM, Chase RL, Pregoner JF. (1987). Oxidation of ferrous iron during peroxidation of lipid substrates. *Biochim Biophys Acta* 921:457-464.
- Chandrashekhara VM, Ranpariya VL, Ganapathy S, Parashar A, Muchandi AA. (2010). Neuroprotective activity of *Matricaria recutita* Linn against global model of ischemia in rats. *J Ethnopharmacol* 127:645-651.
- Chinoy NJ. (2003). Fluoride stress on antioxidant defense systems. *Fluoride* 36:138-141.
- Chirumari K, Reddy PK. (2007). Dose-dependent effects of fluoride on neurochemical milieu in the hippocampus and neocortex of rat brain. *Fluoride* 40:101-110.
- Claiborne A. (1985). Catalase activity. In: Greenwald RA, ed. *CRC Handbook of Methods for Oxygen Radical Research*. Boca Raton, FL: CRC Press, pp. 283-284.
- Devasagayam TP, Sainis KB. (2002). Immune system and antioxidants, especially those derived from Indian medicinal plants. *Indian J Exp Biol* 40:639-655.
- Emsley J, Jones DJ, Miller JM, Overill RE, Waddilove RA. (1981). An unexpectedly strong hydrogen bond: *ab initio* calculations and spectroscopic studies of amide-fluoride systems. *J Am Chem Soc* 103:24-28.
- Gupta AK, Chitme HR, Dass SK, Misra N. (2006). Antioxidant activity of *Chamomile recutita* capitula methanolic extracts against  $\text{CCl}_4$ -induced liver injury in rats. *J Pharmacol Toxicol* 1:101-107.
- Halliwell B. (1991). Reactive oxygen species in living systems: source, biochemistry, and role in human disease. *Am J Med* 91:14S-22S.
- Khynriam D, Prasad SB. (2003). Changes in endogenous tissue glutathione level in relation to murine ascites tumor growth and the anticancer activity of cisplatin. *Braz J Med Biol Res* 36:53-63.
- Li J, Cao S. (1994). Recent studies on endemic fluorosis in China. *Fluoride* 27:125-128.
- Litchfield JT Jr, Wilcoxon F. (1949). A simplified method of evaluating dose-effect experiments. *J Pharmacol Exp Ther* 96:99-113.
- Liu C, Tu FX, Chen X. (2008). [Neuroprotective effects of apigenin on acute transient focal cerebral ischemia-reperfusion injury in rats]. *Zhong Yao Cai* 31:870-873.
- Lowry OH, Rosebrough NJ, Farr AL, Randall RJ. (1951). Protein measurement with the Folin phenol reagent. *J Biol Chem* 193:265-275.
- Marten D. (1995). Chamomile: The herb and the remedy. *J Chir Acad Homeopath* 6:15-18.
- Misra HP, Fridovich I. (1972). The role of superoxide anion in the autoxidation of epinephrine and a simple assay for superoxide dismutase. *J Biol Chem* 247:3170-3175.
- Moron A, De Pierre JW, Mannervick B. (1979). Levels of glutathione, glutathione reductase, glutathione-S-transferase activities in rat liver. *Biochim Biophys Acta* 582:67-68.
- Mundy WR, Freudenberg TM, Kodavanti PR. (1997). Aluminum potentiates glutamate-induced calcium accumulation and iron-induced oxygen free radical formation in primary neuronal cultures. *Mol Chem Neuropathol* 32:41-57.
- Newall CA, Anderson LA, Phillipson JD. (1996). *Herbal Medicines: A Guide for Health-Care Professionals*. London: Pharmaceutical Press.
- Noonan K, Arensman RM, Hoover JD. (2004). Herbal medication use in the pediatric surgical patient. *J Pediatr Surg* 39:500-503.
- Prabhakar KR, Veerapur VP, Parihar KV, Priyadarsini KI, Rao BS, Unnikrishnan MK. (2006). Evaluation and optimization of radioprotective activity of *Coronopus didymus* Linn. in gamma-irradiated mice. *Int J Radiat Biol* 82:525-536.
- Rekka EA, Kourounakis AP, Kourounakis PN. (1996). Investigation of the effect of chamazulene on lipid peroxidation and free radical processes. *Res Commun Mol Pathol Pharmacol* 92:361-364.
- Sedlak J, Lindsay RH. (1968). Estimation of total, protein-bound, and nonprotein sulfhydryl groups in tissue with Ellman's reagent. *Anal Biochem* 25:192-205.
- Shutenko Z, Henry Y, Pinard E, Seylaz J, Potier P, Berthet F, Girard P, Sercombe R. (1999). Influence of the antioxidant quercetin *in vivo* on the level of nitric oxide determined by electron paramagnetic resonance in rat brain during global ischemia and reperfusion. *Biochem Pharmacol* 57:199-208.
- Siesjö BK, Bengtsson F. (1989). Calcium fluxes, calcium antagonists, and calcium-related pathology in brain ischemia, hypoglycemia, and spreading depression: A unifying hypothesis. *J Cereb Blood Flow Metab* 9:127-140.
- Sinha M, Manna P, Parames CS. (2007). Aqueous extract of the bark of *Terminalia arjuna* plays a protective role against sodium-fluoride-induced hepatic and renal oxidative stress. *J Nat Med* 61:251-260.
- Tunali-Akbay T, Sener G, Salvarli H, Sehirli O, Yarat A. (2007). Protective effects of *Ginkgo biloba* extract against mercury(II)-induced cardiovascular oxidative damage in rats. *Phytother Res* 21:26-31.
- Vani LM, Reddy KP. (2000). Effects of fluoride accumulation on some enzymes of brain and gastrocnemius muscle of mice. *Fluoride* 33:17-26.
- Varner JA, Huie CW, Horvath W, Jensen KF, Isaacson RL. (1993). Chronic  $\text{AlF}_3$  administration: II. Selected histological observations. *Neurosci Res Commun* 13:99-104.
- Varner JA, Jensen KF, Horvath W, Isaacson RL. (1998). Chronic administration of aluminum-fluoride or sodium-fluoride to rats in drinking water: Alterations in neuronal and cerebrovascular integrity. *Brain Res* 784:284-298.
- World Health Organization (WHO). (2002). Environmental Health Criteria. Geneva, Switzerland: Fluoride IPS, pp. 227.

Copyright of Pharmaceutical Biology is the property of Taylor & Francis Ltd and its content may not be copied or emailed to multiple sites or posted to a listserv without the copyright holder's express written permission. However, users may print, download, or email articles for individual use.